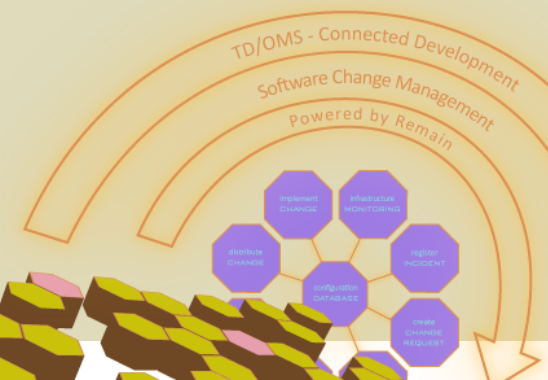




Gravity

➤ A New Look on Connected Development





Introduction

- Wim Jongman
- wim.jongman@remainsoftware.com
- Social Media
 - Twitter [@wimjongman](https://twitter.com/wimjongman)
 - Google+ wim.jongman@gmail.com
 - Facebook: No





Important Things

- Why Gravity
- Multi-Platform what does that mean
- Gravity Architecture
- Sneak Preview





Why Gravity





Why Gravity





Why Gravity





Why Gravity

Sign On

System : REMAIN
Subsystem . . . : GRAVITY
Display : SPACE-EXPO

User
Password

HELP!!

(C) COPYRIGHT IBM CORP. 1980, 2007.





Why Gravity



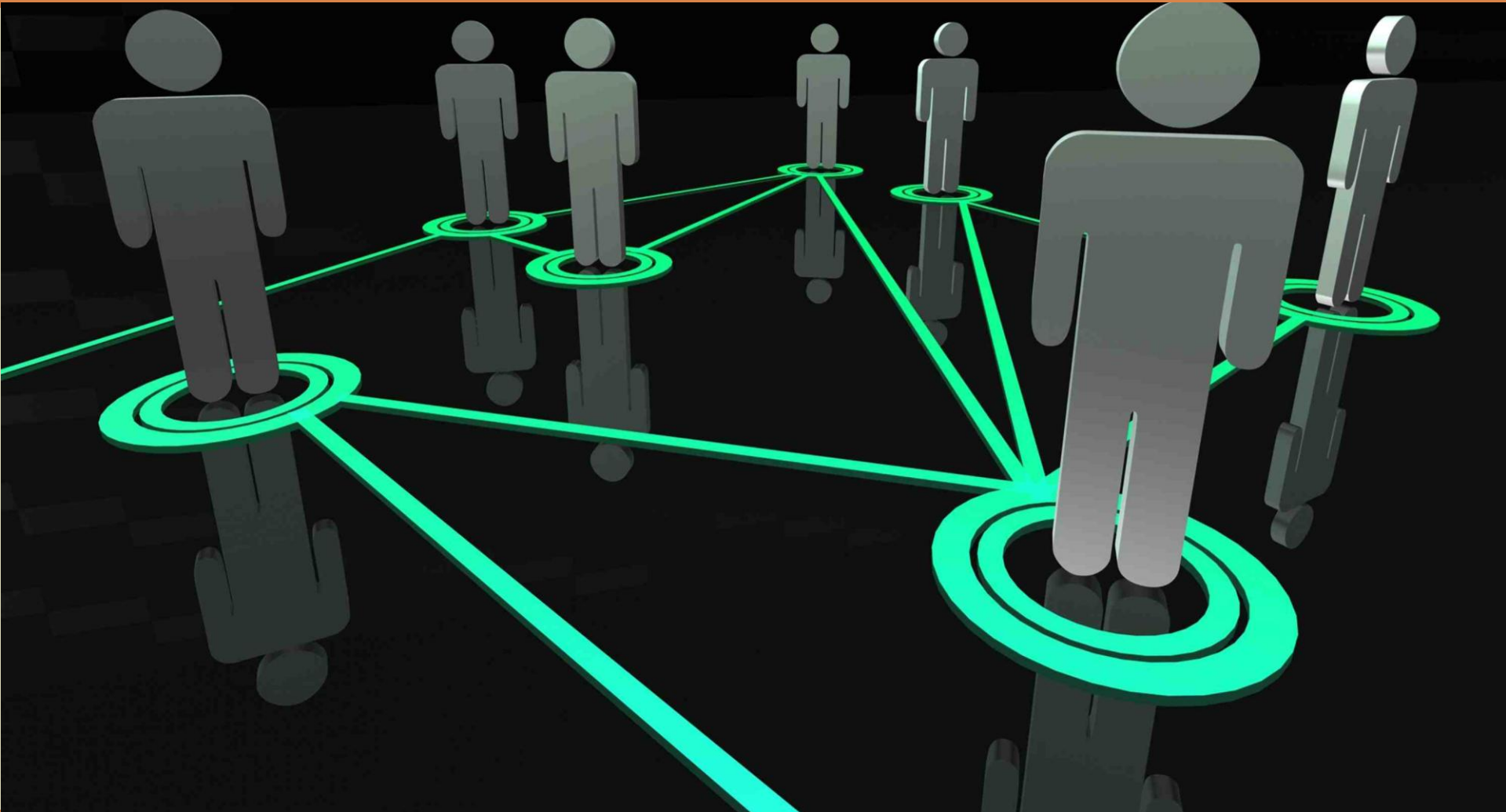


Why Gravity





Why Gravity



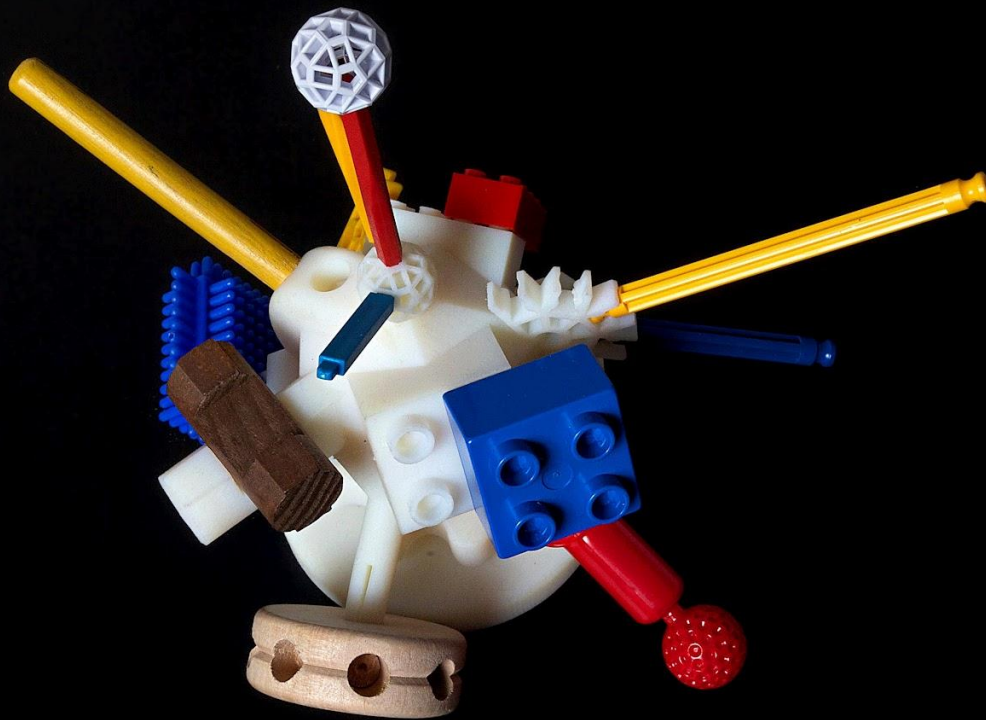


Why Gravity





Why Gravity



Why Gravity



“Gravity”?





Why Gravity





Why Gravity

BEENHAKKER



Revalidatiehulpmiddelen



Why Gravity





Why Gravity





Why Gravity





Why Gravity





Why Gravity





Why Gravity





Multiplatform

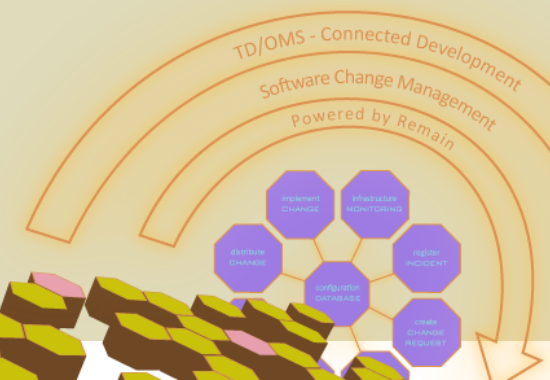
➤ What does that mean





Multiplatform

➤ What does that mean





Multiplatform Philosophy

- Clients
- Servers
- Managed Machines





Multiplatform

➤ Clients

- Eclipse Java Technology

- Rich Clients

- Windows, Linux, Mac OSX

- Embedded

- Eclipse, Rational, ...



➤ Connected Development





Multiplatform

➤ Clients

➤ Web



➤ Connected Development





Multiplatform

➤ Server

➤ Gravity Main Server

- WAR (application server)

➤ Gravity Discovery Server

- WAR
- Stand Alone





Multiplatform

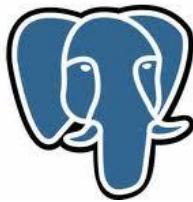
➤ Gravity Database

➤ Free (semi)

ORACLE®



PostgreSQL



...

➤ Connected Development





Multiplatform

➤ Managed Machines

➤ Platform Manager

- Hardware
 - IBM i, Windows, Mac, Unix, Linux





Multiplatform

➤ Managed Machines

➤ Platform Manager

- Hardware
 - IBM i, Windows, Mac, Linux



➤ Connected Development





Multiplatform

➤ Managed Products

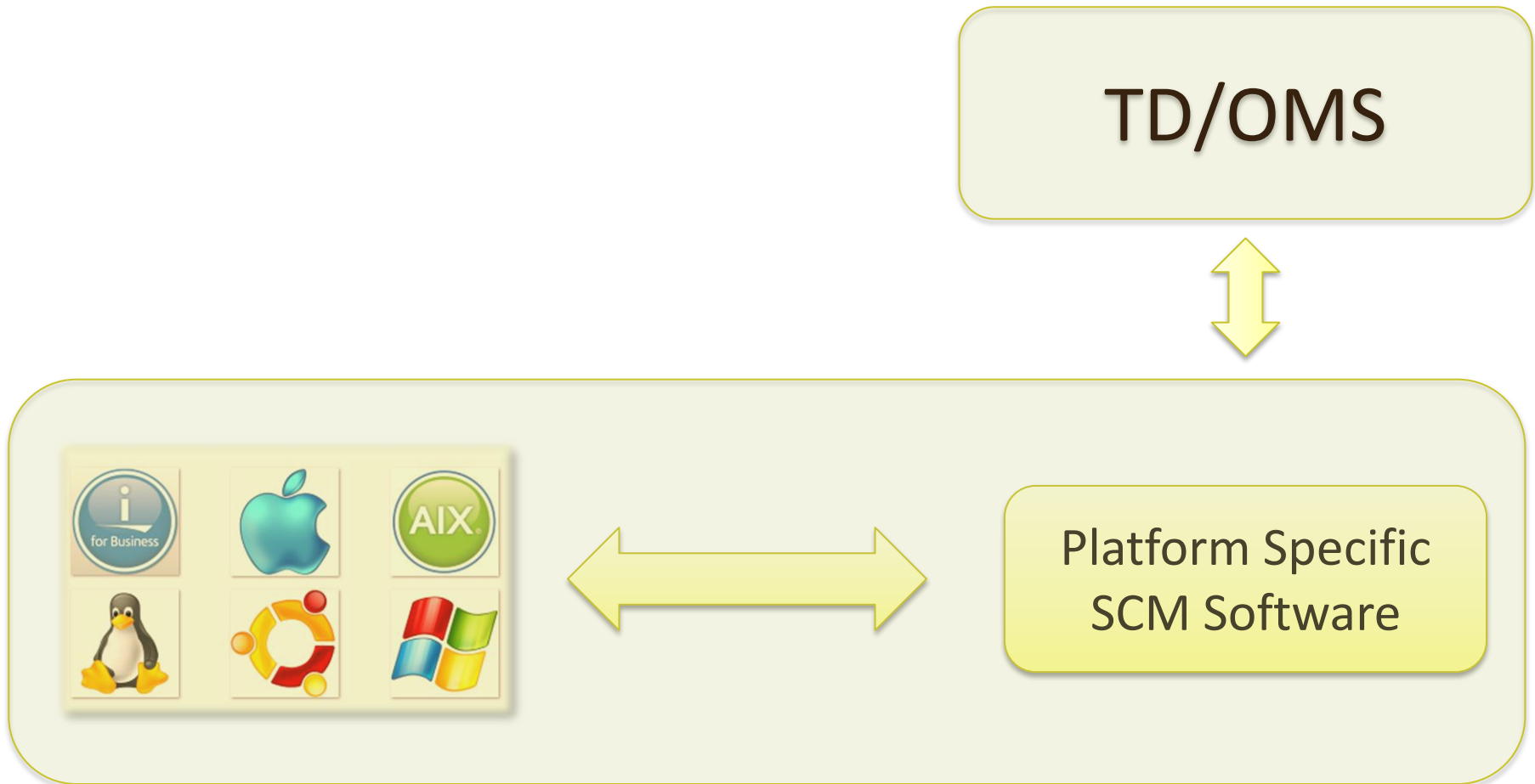
➤ Platform Manager

- Software
 - Tomcat, WAS, Notes, DB2, ..





Multiplatform





Multiplatform



Gravity Interface

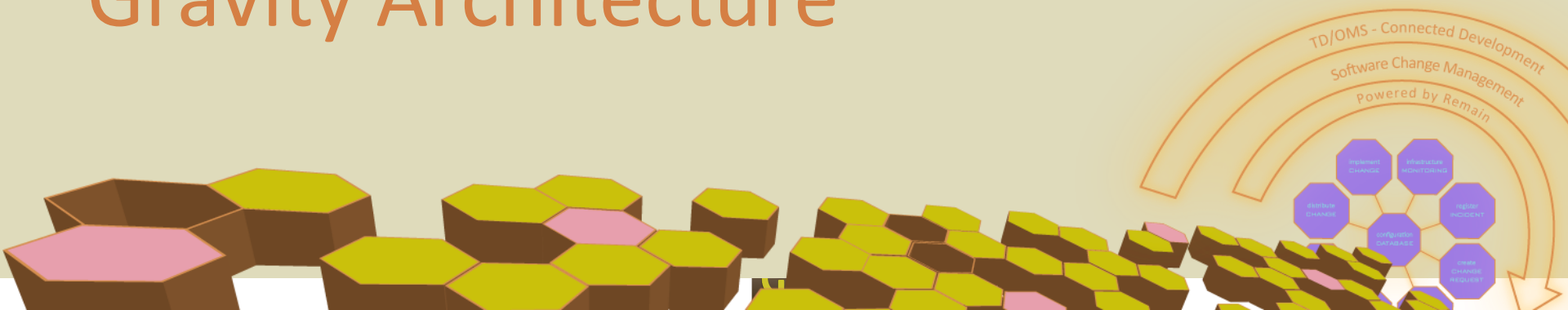


Platform Specific



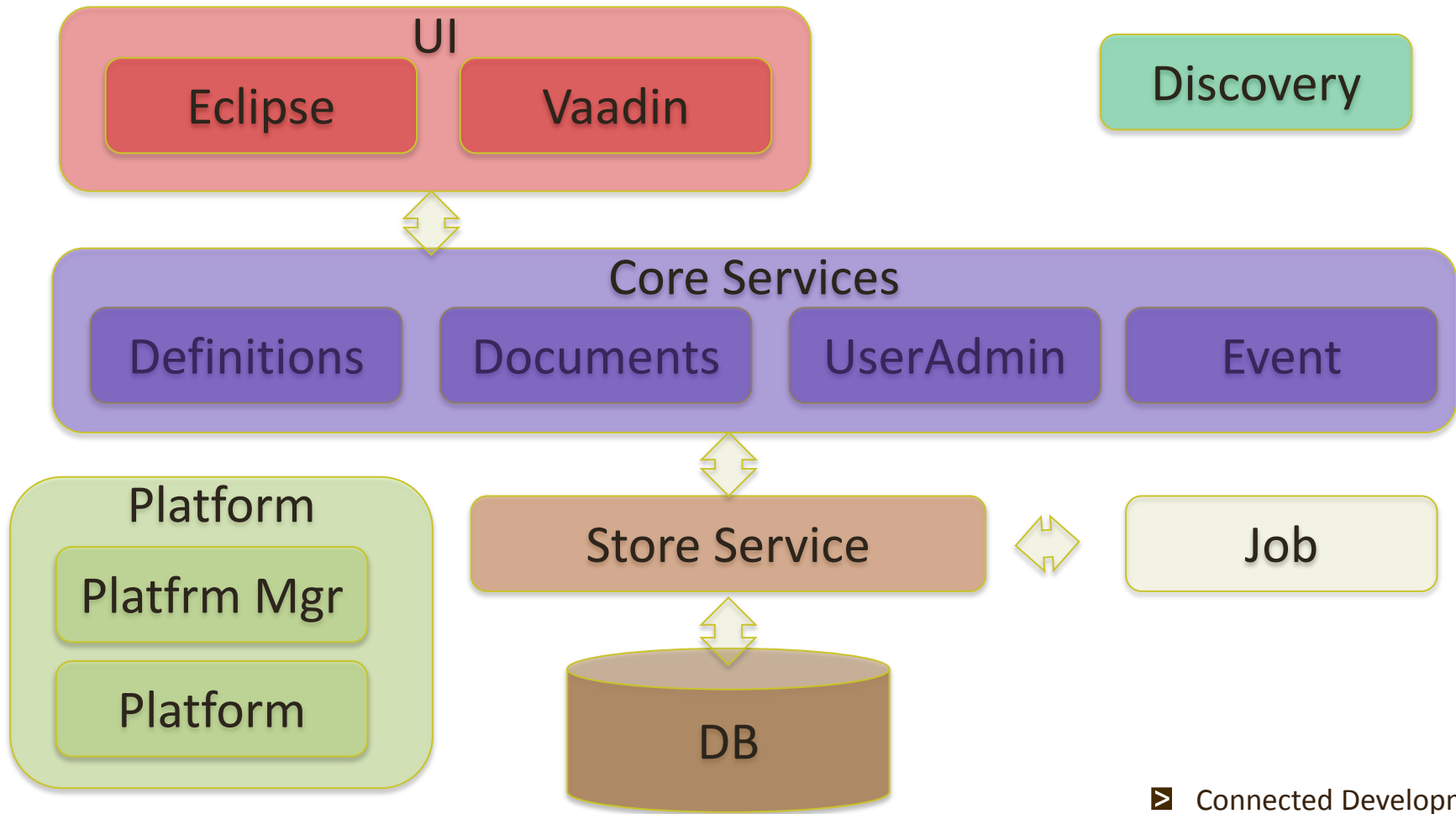


Gravity Architecture



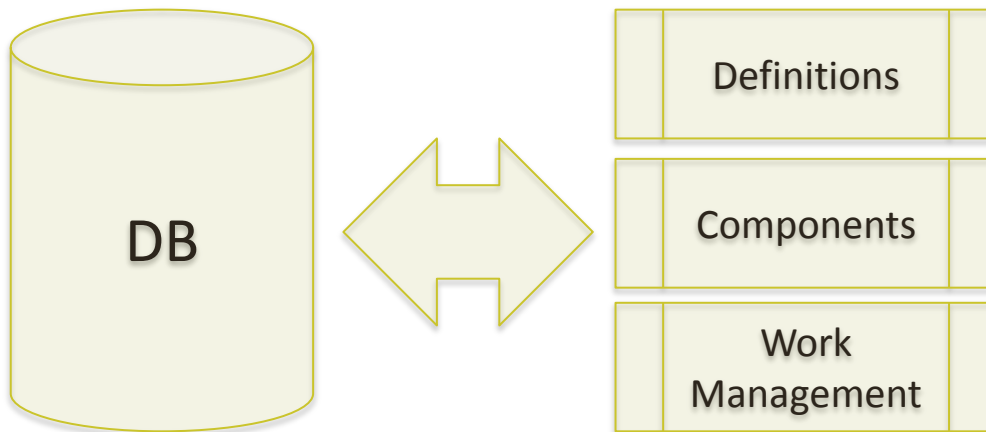


Gravity Architecture



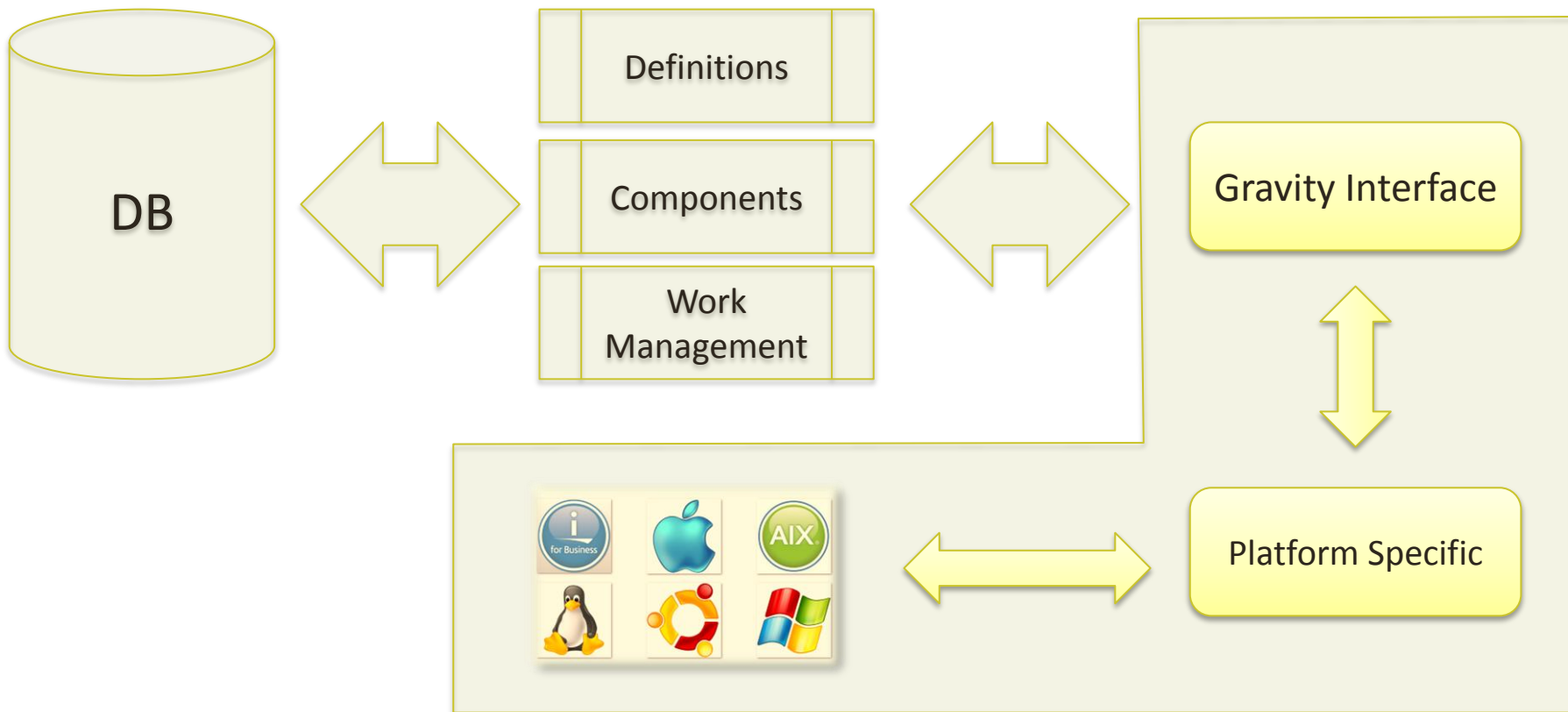


Gravity Architecture





Gravity Architecture





Gravity Preview





Gravity Preview

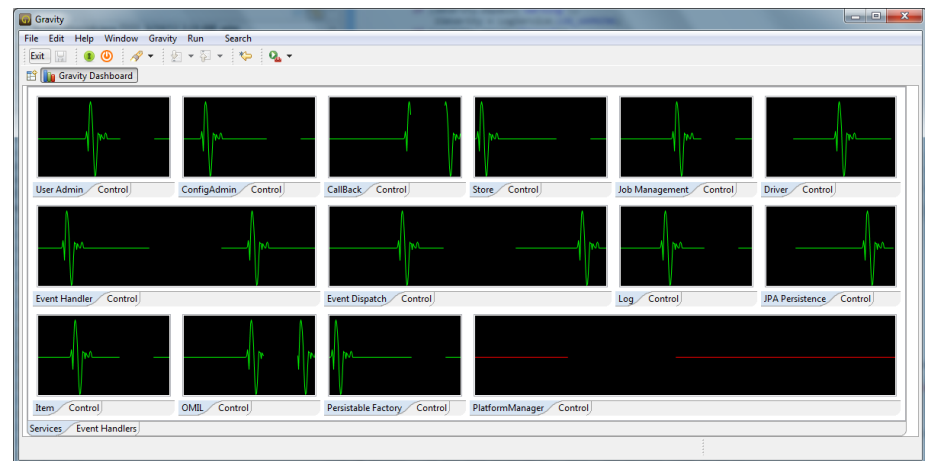
- Dashboard
- Roles
- Definitions
- Events
- Work Management
- Jobs
- Platform





Gravity Preview - Dashboard

- Now: Internal Gravity State
- Later: Personalised Dashboard
 - Release State
 - Open Issues
 - Backlog
 - ...



➤ Connected Development





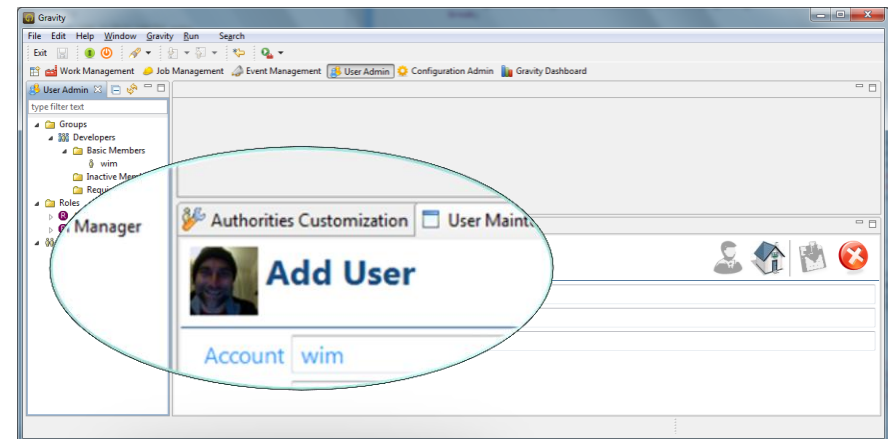
Gravity Preview - Roles





Gravity Preview - Roles

- Gravity Authorisation and Authentication
 - Users
 - Groups (internal/external)
 - Roles





Gravity Preview

- Create a User
- Extendable: Create Additional Fields
 - Department, Manager
- Put the user in a group
- Show Role (Application Manager)



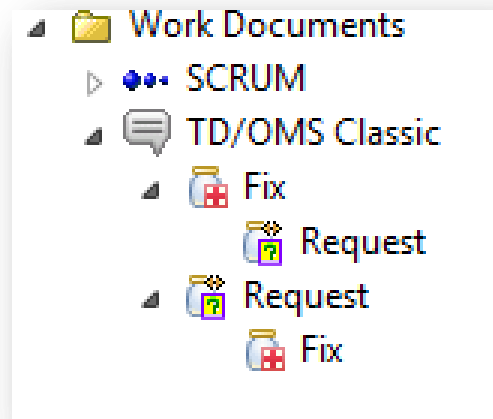


Gravity Preview - Definitions

➤ User Defined Document Structure

➤ Examples:

- Classic TD/OMS, Scrum, PRINCE, user defined





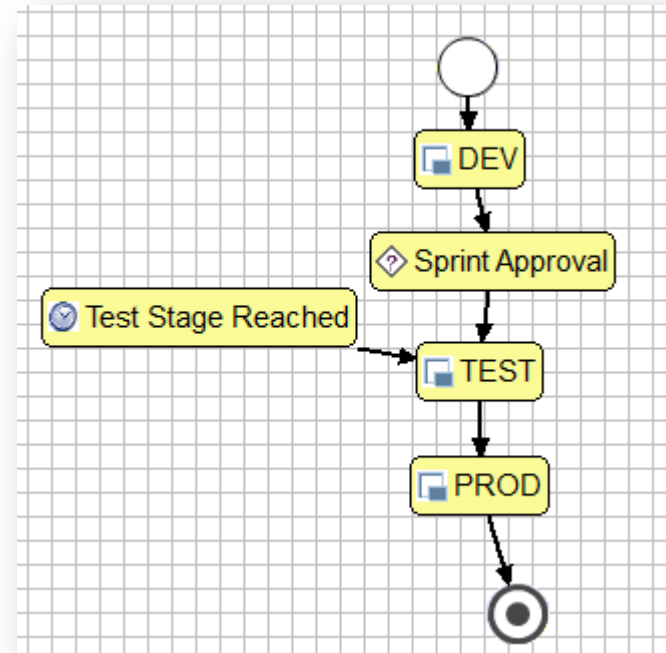
Gravity Preview - Definitions

➤ Life Cycle

- The defined workflow on a high level

➤ Application

- The Classic OMS Application
- Can use multiple Life Cycles





Gravity Preview

- Create a Work Document Structure
 - “Scrum”
- Create a Life Cycle
 - A “Scrum” Life Cycle
- Create an Application
 - “Order Processing”
 - Use the “Scrum” Life Cycle





Gravity Preview

Scrum is an agile software development framework that features development in short cycles called ***sprints***. A ***sprint*** is typically 2-4 weeks. During each ***sprint***, the developers work on a prioritized list of customer requirements called ***user stories***.





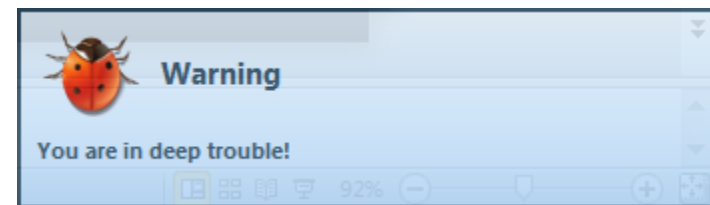
Gravity Preview- Work Management

- Work Documents
 - Attributes
 - Planning and Estimates
 - Descriptions
 - Collaborators
 - Attachments
 - Discussions





Gravity Preview - Events





Gravity Preview - Events

➤ Events

➤ Event Window vs. Guaranteed Delivery

➤ Topic

- /gravity/item/item/add
- /gravity/item/item/update

➤ Event Providers

➤ Event Consumers

➤ Notification

➤ E-Mail Delivery





Gravity Preview - Events

- We want to be notified if someone creates or updates a work document (item)
- Hook the correct topic to the handlers
 - E-mail event handler
 - Notification event handler
- Change an Item





Gravity Preview- Jobs

- Background jobs
- Use all computers in a grid
- Modeled after IBM-i





Gravity Preview- Platform

- Discovery of Systems
- Automatic load into the database
- Use in Life Cycle Definition
- Not yet finished





Thank You.



▶ Connected Development

